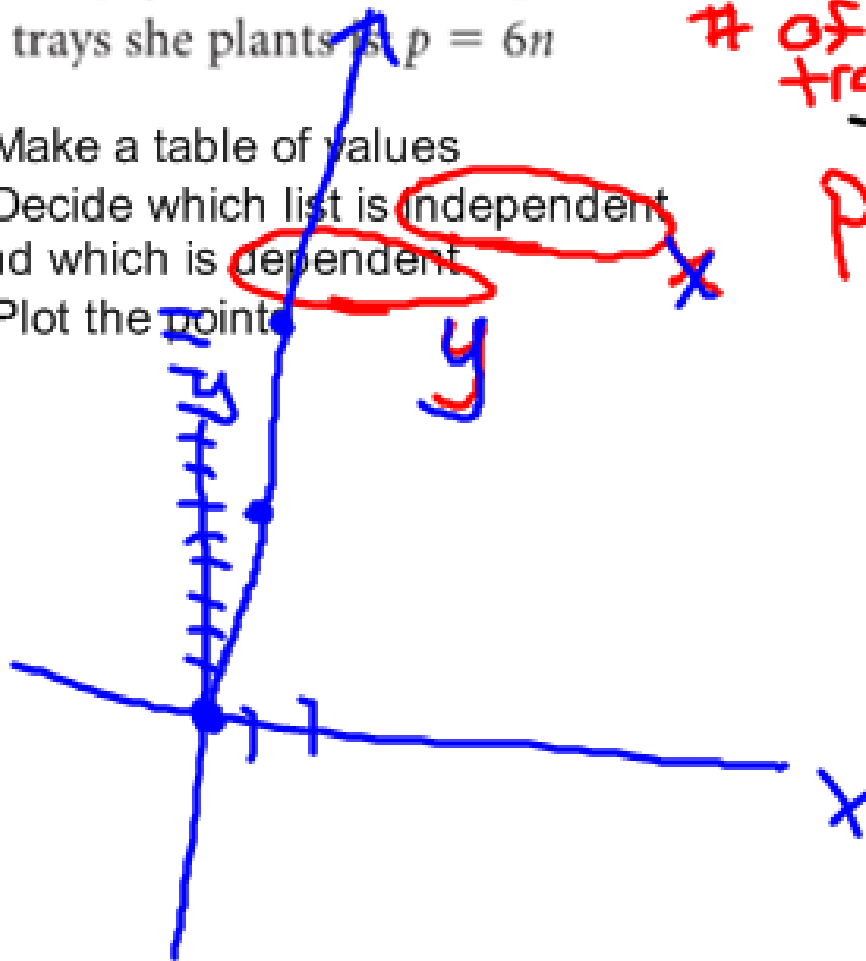


you can use an equation to make a table of values (or ordered pairs) and then use a table of values to draw a graph

Sylvia works at a garden nursery. She is paid \$6 for every tray of tomatoes she plants. Let n represent the number of trays Sylvia plants. Let p represent her pay in dollars. An equation that relates Sylvia's pay to the number of trays she plants is $p = 6n$

- Make a table of values
- Decide which list is independent and which is dependent
- Plot the points

# of trays (x)	0	1	2	3
pay (y)	0	6	12	18



A Grade 8 class is going on a field trip. The bus seats 24 students. An equation that relates the number of boys on the bus to the number of girls is $b = 24 - g$, where g represents the number of girls and b represents the number of boys.

b and g
doesn't matter which is x
and which y

The equation of a linear relation is: $y = -4x + 1$

- a) Create a table of values for the relation for integer values of x from -4 to 4 .
- b) Graph the relation.
- c) Describe the relationship between the variables in the graph.

x is always independent

PRACTICE Pg 363 #5a, 5g, 6a,
6b, 6g, 6h, 7, 8, 11, 12, 13