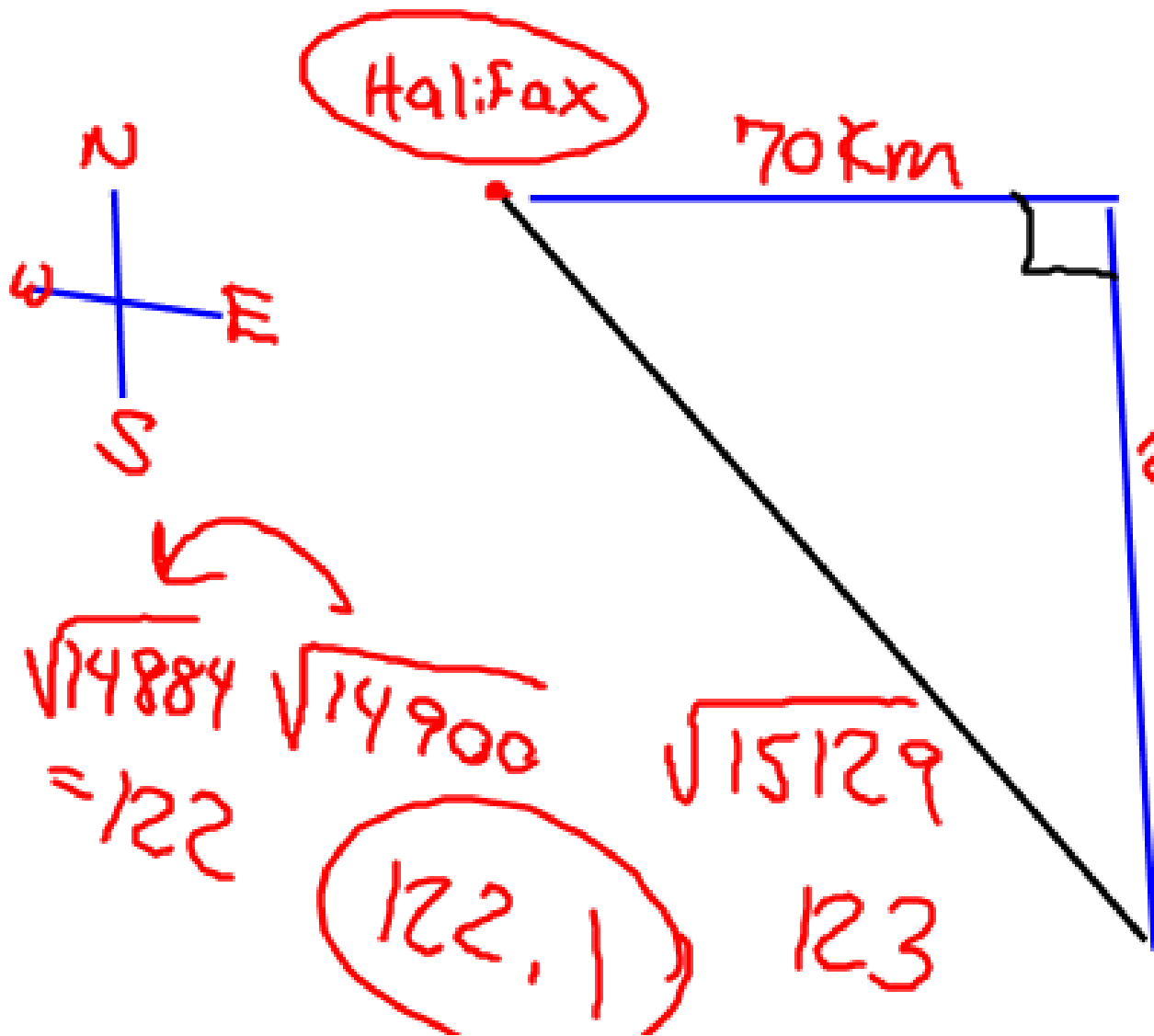


A boat sails 70km east of Halifax harbour. It then sails 100km south. The boat begins to sink and the Coast Guard Helicopter is dispatched. What is the most direct route to the boat from Halifax in km? Draw and label a diagram of the route.



$$a^2 + b^2 = h^2$$

$$70^2 + 100^2 = h^2$$

$$4900 + 10000 = h^2$$

$$\sqrt{14900} \approx h$$

$$= h$$

$$\sqrt{14884} = 122$$

$$\sqrt{14900} = 122.1$$

$$\sqrt{15129} = 123$$